

Instructions for use



Charger 1.0 miniRITE R miniBTE R

Oticon More™
Oticon Zircon
Oticon Play PX
Oticon Opn S™
Oticon Opn Play™
Oticon Ruby
Oticon CROS PX

Introduction to this booklet

This booklet guides you on how to use and maintain your new charger.

Ensure you read this booklet carefully, including the **Warnings** section. This will help you get the most benefit from your charger.

If you have additional questions about the use of your charger, contact your hearing care professional.

For your convenience, this booklet contains a navigation bar to help you navigate through the different sections.

| **About** | [Getting started](#) | [Daily use](#) | [Warnings](#) | [More info](#) |

Your hearing aids contain a built-in and non-removeable rechargeable lithium-ion battery. Ensure to familiarize yourself with the safety and handling information related to rechargeable lithium-ion hearing aids in the separate hearing aid instruction for use.

Intended use

Intended use	<p>The charger is intended to recharge the hearing aids and CROS transmitter that contain rechargeable batteries.</p> <p>The product is intended to be used together with the given hearing solution.</p>
Indications for use	<p>There are no indications for use (diagnoses) for the charger itself.</p>
Intended user	<p>Person with hearing loss using a hearing aid and their caregivers. Hearing care professional responsible for adjusting the accessory.</p>
Intended user group	<p>Adults and children older than 36 months.</p>
Use environment	<p>Home setting.</p>
Contraindications	<p>No contraindications.</p>
Clinical benefits	<p>See clinical benefits of the hearing aid.</p>

IMPORTANT NOTICE

For details on the functionality of your specific hearing aid solution, refer to your hearing aid's instructions for use.

Table of contents

About

Package content	5
Charger	6
Temperature conditions	7

Start up

Prepare charger	8
Charge the hearing aids	9
Charging time	10

Daily use

Power the charger using other sources	12
Caring for your charger	13

Warnings

Warnings	14
----------	----

More info

Troubleshooting	16
Charger: Conditions of use	20
Compliance statements	21
Warranty	27

Package content

The packaging box consists of the following elements:



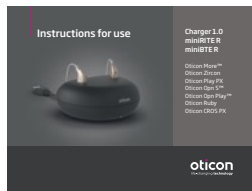
Charger



Power plug
(varies from
country to country)



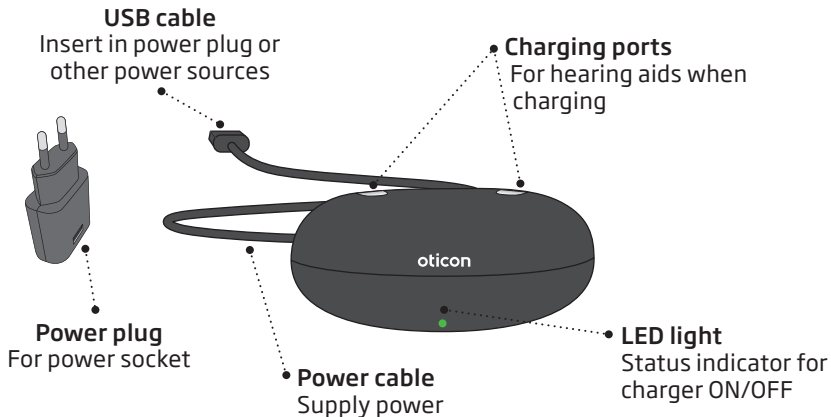
Case for charger



This booklet

Charger

What it is and does



Temperature conditions

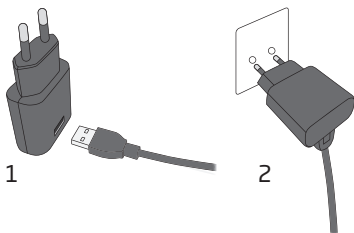
Temperature	Charging condition
Below +5°C (+41°F)	No charging due to low temperature
+10°C to +35°C (+50°F to +95°F)	Best charging condition. Charging takes up to 3 hours.
+5°C to +10°C and +35°C to +38°C (+41°F to 50°F and +95°F to +100°F)	Extended charging. Charging takes up to 4 hours.
Above +38°C (+100°F)	No charging due to high temperature

IMPORTANT NOTICE

Ensure you always leave the charger connected to a power source when the hearing aid is seated in the charging port. Turning the charger OFF makes the hearing aid turn ON and start using battery power.

Prepare charger

Connect to power source

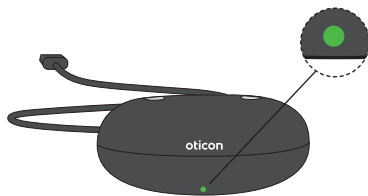


1. Insert the USB plug into the power plug.

2. Insert the power plug into a power socket.

The charger turns ON automatically.

Charger is turned ON



When the charger is connected to power, the GREEN LED turns ON.

Charge the hearing aids

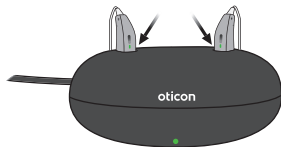
Place hearing aids in charger



Place the hearing aids in the charging ports as shown in the picture. Make sure that the hearing aids match the right and left color indicators on the charger.

The RED indicator is for the right side hearing aid. The BLUE indicator is for the left side hearing aid.

Charging



The hearing aid LED lights turn ON when the hearing aids are correctly placed in the charger.

Hearing aid LED light charging status:

ORANGE / RED* = Charging
GREEN = Fully charged

*The color is either orange or red depending on the hearing aid family. For more information see your hearing aid's instructions for use.

Charging time

Ensure you fully charge your hearing aid before first time use.

Charge your hearing aid every night. That ensures you start your day with a fully charged hearing aid.

Be aware that charging time may vary depending on the remaining capacity of the battery and between the left / right side hearing aid.

If your hearing aid's battery is completely drained the normal charging time is:

miniRITE R	Fully charged	50% charged	25% charged
	3 hours	1 hour	0.5 hours
miniBTE R	Fully charged	44% charged	22% charged
	3.5 hours	1 hour	0.5 hours

When the battery is fully charged, the charging process stops automatically.

Leave the hearing aid in the charger when you do not use it.

Remember to keep the charger connected to a power source at all times.

Note

If you have not used your hearing aid in a long time and you then try to recharge it, it may take up to 30 seconds before the hearing aid begins charging. For more information, see your hearing aid's instructions for use.

Power the charger using other sources

You can power the charger from other sources than a power socket. This can be done by using the charger's USB cable.

Ensure that the power source is USB 2.0 compliant, with a minimum of 500mA output.

Examples of power sources:

- Power bank
- Computer
- Car

Note

When using a power bank, ensure that it does not have a power-saving or auto-shutdown mode. As this can result in your hearing aid not being fully charged or not charged at all.

IMPORTANT NOTICE

When using a power socket, use the supplied original power supply (5.0V/1A) for the charger.

Caring for your charger

Always ensure that the charger is dry and clean before use. Keep the charging ports clean from dust by using a dry cloth. Do not use water or cleaning fluids to clean the charging ports.

Store your charger in a dry location, e.g. in the bedroom.

Ensure you keep the charger in an environment with a temperature between +5°C and +38°C (+41°F and +100°F).

General warnings

For your personal safety and to ensure correct usage, you should familiarize yourself fully with the following general warnings before using your charger. Consult your hearing care professional if you experience unexpected operations or serious incidents with your charger during use or because of its use. Your hearing care professional will support you with issue handling and, if relevant, reporting to the manufacturer and/or the national authorities.

Usage of charger

The charger should be used only as directed and adjusted by your hearing care professional.

Risk of burns

Do not place anything but the hearing aids in the charger ports.

Choking hazards

Charger, hearing aids and their parts should be kept out of reach of children and anyone who might swallow these items or otherwise cause injury to themselves.

If a small part is swallowed, see a doctor or go to the hospital immediately.

If a battery or hearing aid is swallowed, see a doctor immediately and contact the National Poison Center at 1-800-222-1222 or National Battery Ingestion Hotline at 800-498-8666.

Heat

The charger must never be exposed to extreme heat, e.g. left inside a parked car in the sun.

The charger must not be dried in microwave ovens or other ovens.

Connection to external equipment

The safety of the charger, when connected to external equipment with USB cable, is determined by the external signal source. When the charger is connected to external equipment which is plugged into a power socket, this equipment must comply with IEC 62368-1 or equivalent safety standards.

Fire hazards

The power source in your charger has insufficient energy to cause fire in normal usage conditions.

Troubleshooting

Symptom	Possible causes
The charger LED remains turned OFF when the charger is connected to power	The charger is not turned ON
The charger LED shows long ORANGE blinks	The hearing aid or charger's temperature is too warm
The charger LED repeatedly shows three short ORANGE blinks	The charger's temperature is too cold
	System error

Solutions

Verify that the power plug is correctly connected

Ensure that charging has started, to make sure the power source delivers sufficient output for your charger

Move the charger and hearing aid to a location with a temperature between +5°C and +38°C (+41°F and +100°F)

Move the charger to a location with a temperature between +5°C and +38°C (+41°F and +100°F)

Contact your hearing care professional

Continues on next page

Troubleshooting

Symptom	Possible causes
The hearing aid LED blinks GREEN when hearing aid is placed in the charger	Hearing aid has not been in use for an extended period of time
The hearing aid LED remains turned OFF when the hearing aid is placed in the charger	The charger is not turned ON
	The hearing aid or charger's temperature is either too warm or too cold
	Charging is incomplete. The charger has stopped charging to protect the battery.
	The hearing aid is not correctly seated in the charger
The hearing aid LED blinks ORANGE / RED when the hearing aid is placed in the charger	System error

Solutions

Depending on how depleted the battery in the hearing aid is, the hearing aid automatically resumes normal charging mode after a timeframe of up to 10 minutes

Ensure you leave the hearing aid in the charger during this process

Verify that the charger power plug is correctly connected

Move the charger and hearing aid to a location with a temperature between +5°C and +38°C (+41°F and +100°F)

Reinsert the hearing aid into the charger. This completes the charging within approximately 15 minutes.

Check the charging ports for foreign objects

Contact your hearing care professional

Charger: Conditions of use

Operational environment conditions	Temperature: +5°C to +38°C (+41°F to +100°F) Humidity: 5% to 93%, non-condensing Atmospheric pressure: 700 hPa to 1060 hPa
Transportation and storage conditions	Temperature and humidity shall not exceed the below limits for extended periods during transportation and storage: Temperature: -25°C to +70°C (-13°F to +158°F) Humidity: 5% to 93%, non-condensing

For information about your hearing aid's Conditions of use, see your hearing aid's instructions for use.

Compliance statements

USA and Canada

This device complies with part 18 of the FCC Rules.

Radiofrequency radiation exposure information

This device complies with FCC and Innovation, Science and Economic Development Canada's RF radiation exposure limits set forth for an uncontrolled environment.

This equipment should be installed and operated with minimum distance of 20 centimeters / 8 inches between the radiator and your body. This transmitter must not be co-located or operating in conjunction with any other antenna or transmitter.

Use of other accessories not verified by the manufacturer may not ensure compliance with FCC and Innovation, Science and Economic Development Canada's RF exposure guidelines.

User information

This equipment has been tested and found to comply with the limits pursuant to part 18 of the FCC Rules.

These limits are designed to provide reasonable protection against harmful interference in a residential installation.

This equipment generates, uses and can radiate radio frequency energy and, if not installed and used in accordance with the instructions, may cause harmful interference to radio communications.

However, there is no guarantee that interference will not occur in a particular installation. If this equipment does cause harmful interference to other electronic equipment, which can be determined by turning the equipment OFF and ON, the user is encouraged to try to correct the interference by one or more of the following measures:

- Reorient or relocate the equipment
- Increase the separation between the equipment

Changes or modifications not expressly approved by the party responsible for compliance could void the user's authority to operate the equipment.

This medical device complies with the Medical Device Regulation (EU) 2017/745.

Declaration of Conformity is available from the headquarters:

Oticon A/S
Kongebakken 9
DK-2765 Smørum
Denmark
www.oticon.global/doc



SBO Hearing A/S
Kongebakken 9
DK-2765 Smørum
Denmark



Waste from electronic equipment must be handled according to local regulations.



Description of symbols and abbreviations used in this booklet



Warnings

Text marked with a warning symbol must be read before using the device.



Manufacturer

The device is produced by the manufacturer whose name and address are stated next to the symbol. Indicates the medical device manufacturer, as defined in EU Regulations 2017/745.



CE mark

The device complies with all required EU regulations and directives.



Electronic waste (WEEE)

Recycle hearing aids, accessories or batteries according to local regulations. Hearing aid users can also return electronic waste to their hearing care professional for disposal. Electronic equipment covered by Directive 2012/19/EU on waste and electrical equipment (WEEE).



Regulatory Compliance Mark (RCM)

The device complies with electrical safety, EMC and radio spectrum requirements for devices supplied to the Australian or New Zealand market.

Description of additional symbols used on labels



Keep dry

Indicates a medical device that needs to be protected from moisture.



Caution symbol

Consult instructions for use for warnings and cautions.



Catalog number

Indicates the manufacturer's catalog number so that the medical device can be identified.



Serial number

Indicates the manufacturer's serial number so that a specific medical device can be identified.



Medical Device

The device is a medical device.



Nature of supply voltage

Indicates that the nature of the device's power supply voltage shall be DC (direct current).



FW

Firmware version used in the device.

International warranty

Your device is covered by an international warranty issued by the manufacturer. This international warranty covers manufacturing and material defects in the device itself, but not in accessories such as batteries, tubing, speakers, earpieces and filters, etc. Problems arising from improper/incorrect handling or care, excessive use, accidents, repairs made by an unauthorized party, exposure to corrosive conditions, physical changes in your ear, damage due to foreign objects entering the device or incorrect adjustments are NOT covered by the international warranty and may void it. The above international warranty does not affect any legal rights that you might have under applicable national legislation governing the sale of consumer goods in the country where

you have bought your device. Your hearing care professional may also have issued a warranty that goes beyond the clauses of this international warranty. Please consult him/her for further information.

If you need service

Take your device to your hearing care professional, who may be able to sort out minor problems and adjustments immediately. Your hearing care professional can assist you in obtaining warranty service from the manufacturer. Your hearing care professional may charge a fee for their services.

Warranty

Certificate

Name of owner: _____

Hearing care professional: _____

Hearing care professional's address: _____

Hearing care professional's phone: _____

Purchase date: _____

Warranty period: _____ Month: _____

Model: _____ Serial no.: _____



oticon
life-changing **technology**